

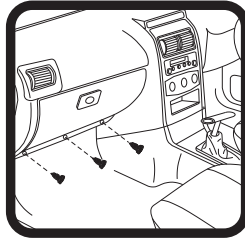
RYCO FILTERS



FITTING INSTRUCTIONS FOR RYCO CABIN FILTER RCA114P.

HOLDEN ASTRA (Filter is located behind glove box)

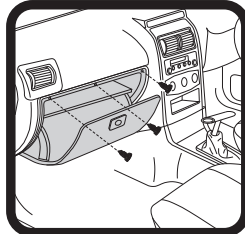
1: Remove 3 screws from bottom of glove box as shown



8: Replace 3 screws in bottom of glove box as shown



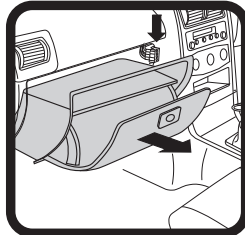
2: Remove 3 screws from top of glove box as shown



7: Replace 3 screws in top of glove box as shown



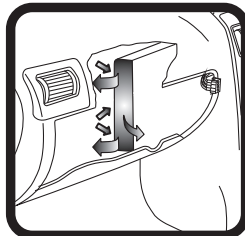
3: Remove glove box after disconnecting electrical connections.



6: Reconnect electrical connection and replace glove box.



4: Remove used filter, note direction of flow arrow on side of filter.



5: Fit new RYCO filter, note direction of flow arrow on side of filter.



GUD Automotive Pty Ltd
245 Sunshine Road Tottenham
Victoria 3012 Australia.
www.rycofilters.com.au

GUD (NZ) Ltd
626A Rosebank Road Avondale
Auckland, New Zealand
www.ryco.co.nz