

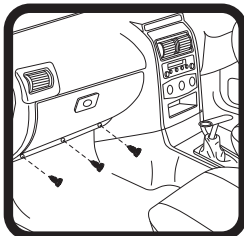
# RYCO FILTERS



## FITTING INSTRUCTIONS FOR RYCO CABIN FILTER RCA114MS

### HOLDEN ASTRA (Filter is located behind glove box)

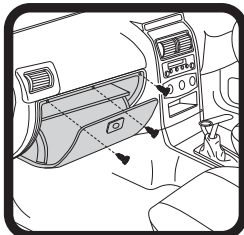
1: Remove 3 screws from bottom of glove box as shown



8: Replace 3 screws in bottom of glove box as shown



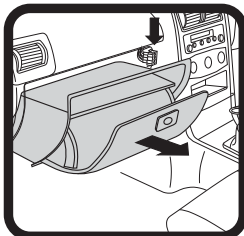
2: Remove 3 screws from top of glove box as shown



7: Replace 3 screws in top of glove box as shown



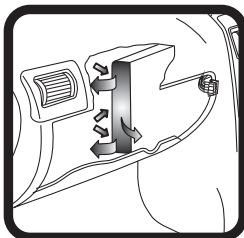
3: Remove glove box after disconnecting electrical connections.



6: Reconnect electrical connection and replace glove box.



4: Remove used filter, note direction of flow arrow on side of filter.



5: Fit new RYCO filter, note direction of flow arrow on side of filter.



GUD Automotive Pty Ltd  
29 Taras Ave Altona North  
Victoria 3025 Australia.  
[www.rycofilters.com.au](http://www.rycofilters.com.au)

GUD Automotive -  
A division of GUD (NZ) Holdings Limited  
626A Rosebank Road Avondale  
Auckland, New Zealand  
[www.ryco.co.nz](http://www.ryco.co.nz)